

F493

F493

Cast Iron Swing Check Valve

Class 125

Features & Benefits

- Check valves permit flow in one direction only and close automatically if the flow reverses.
- Entirely automatic in action, depending upon pressure and velocity of flow within the line to perform their functions of opening and closing
- The F493 is a swing check valve with a Bronze trim
- Manufactured to BS EN 16767
- Fusion Bonded Epoxy coating suitable for C3 environment

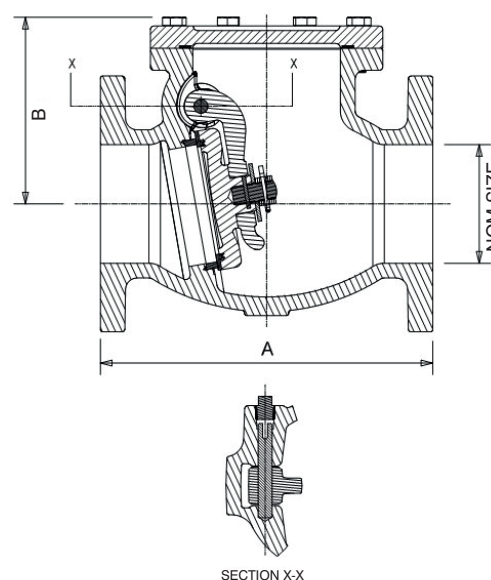


GENERAL VALVES

Materials

PART	MATERIAL	SIZES
Body	Cast Iron BS EN 1561 GJL-250	All
Cap	Cast Iron BS EN 1561 GJL-250	All
Disc	Cast Iron BS EN 1561 GJL-250	All
Body Seat Ring	Bronze BS EN 1982 CC491K	All
Disc Ring	Bronze BS EN 1982 CC491K	All
Hinge	Ductile Iron BSEN1563 EN-GJS-450-10	All
Hinge Pin Plug	Brass BS2874 C2122	All
Hinge Pin	Stainless Steel Type 304	All
Cap Bolts	Steel BS970 43A	All
Gasket	Asbestos Free	All
Body Plate	Aluminium	All

Dimensional Drawing



Dimensions & Weights

SIZE (inch)	WEIGHT (kg)	A (mm)	B (mm)	Kv
2	10.4	203	103	123.70
2 1/2	14.2	216	120	208.90
3	19.0	241	141	316.40
4	33.3	292	162	494
5	49.0	330	187	772
6	63.6	356	211	1111.80
8	112.0	495	270	1976.50
10	189.5	622	316	3088.30
12	247.0	698	357	4447.10

Pressure/Temperature Ratings

TEMPERATURE (°C)	-10 to 65	150	230
PRESSURE (BAR)	13.8	11.4	8.6

Intermediate pressure ratings shall be determined by interpolation.

PRESSURE RATING: Class 125

TEMPERATURE OPERATING RANGE: -10 to 230°C

US END CONNECTION: ANSI Class 125

OPERATOR: Swing Check Valve

SPECIFICATION: Swing check valve with cast Iron body and bonnet to BS EN 1561 GJL-250, cast iron disk to BS EN 1561 GJL-250 with bronze disk facing and bronze seat to BS EN 1982 CC491K. Valve is full bore and manufactured in accordance with BS EN 16767 and rated PN16 with -10 to 65°C temperature range. Gasket material shall be graphite-based. Valve is supplied with drilled flanges in accordance with BS EN 1092-2 PN16. Valve has C3 corrosion level epoxy coating and shall be categorized in accordance with the Pressure Equipment Directive 2014/68/EU and EU and the Pressure Equipment (Safety) Regulations 2016.

FIG NO.	MATERIAL	PED CATEGORY BY VALVE SIZE (DN)			PRODUCT APPLICATIONS			
		SEP	1	2	Group 1 Gas	Group 2 Gas	Group 1 Liquid	Group 2 Liquid
F493	Cast Iron	50-65	80-125	150-300	-	✓	✓	✓

*see Quality Assurance page for more information